



REBAR & MESH

CONVERSION SUPPLIES (PTY) LTD

Company reg. no. 1995/00950/07

3 Davis Road, BEDFORDVIEW, 2008

PO Box 2225, BEDFORDVIEW, 2007

South Africa

Tel# +27 11 791 2291

email: sales@mcspj.co.za

Fax# +27 11 455 1194

website: www.mcspj.co.za



DIAMOND

CORDLESS REBAR CUTTER

MODEL DCC-1618

HANDLING INSTRUCTIONS

TO AVOID SEVERE PERSONAL INJURY OR PROPERTY DAMAGE,
READ THESE INSTRUCTIONS CAREFULLY BEFORE ATTEMPTING TO USE CUTTERS.

Ignorance of proper operating procedures can lead to accidents.

If in doubt about any procedure, contact your nearest authorized agent.

CONTENTS

	Page
General Safety Precautions	2
Parts and specifications	4
Operating Instructions	5
Recharging battery	5
Pre-use check	5
Stopper adjustment	5
Cutting	5
Points of attention	6
Maintenance	7
Cutter blocks	7
Cleaning	7
Oil-level check	7
Oil change	8
Bolt tightness	9

GENERAL SAFETY PRECAUTIONS

·USAGE

Use DCC-1618 on concrete reinforcing bars only.

·RESTRICT USE TO DESIGNATED MATERIALS

There is always a chance that the cut end may shoot out, especially if less than 30cm (1 foot) in length. Exceeding designated material specifications will greatly increase this risk and will also damage the tool.

Do not attempt to cut rebars harder, thicker or thinner than specified (see page 4).

·USE EYE PROTECTION

Wear safety goggles, safety glasses with side shields or a face shield when using cutter.

·PROVIDE SAFETY BARRIERS

Erect safety screens to protect co-workers from flying ends.

Place safety screen under the rebar when working in high places.

·EXERCISE PROPER CONTROL

Hold cutter firmly and maintain proper footing and balance. Do not over-reach. When working in a high place, secure cutter to scaffolding with a safety rope. Check that power cord is not fouled and keep cord away from sharp edges and heat. Check that all adjusting wrenches have been removed before using cutter.

·DISCONNECT BATTERY

Disconnect battery before cleaning, adjusting or servicing. See "RECHARGING BATTERY" page 5.

·BEWARE OF ENVIRONMENT

Do not use cutter in the presence of flammable materials (e.g. paint, thinner, petroleum products, adhesives).

Do not use cutter in a possibly explosive environment (e.g. an area containing fumes, gas or dust) or poorly ventilated areas.

·KEEP WORK AREA TIDY AND WELL LIT

Make sure that work area is properly lit and clear of obstructions. Operator should at all times have an unobstructed view of the cutter, rebar and surrounding area.

·WEAR PROPER APPAREL

Do not wear loose clothes, dangling objects or jewellery. Restrain long hair. The use of a safety helmet and rubber-soled boots is recommended. If safety gloves are worn, be especially careful that glove does not get caught in moving parts.

·KEEP VISITORS AWAY

Keep all visitors at a safe distance from the work area for their own protection and to prevent distraction of the operator.

·MAINTAIN CUTTER WITH CARE

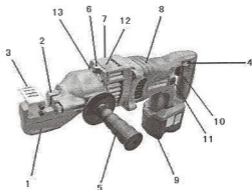
Inspect cutter before each application. Faulty or loose cutter blocks could result in personal injury. Keep handle dry, clean and free from oil and/or grease. Keep housing and piston free of dirt and iron filings. Check that no screws or bolts are loose or missing. Follow instruction for maintenance. Inspect switch, cord, plug and any extension cable at regular intervals.

·STORE CAREFULLY

When not in use, store cutter and accessories in a dry place where they cannot be accessed by unauthorized persons.

PARTS AND SPECIFICATIONS

- 1.Housing
- 2.Cutter blocks
- 3.Cutter guard
- 4.Switch lock
- 5.Side handle
- 6.Release valve
- 7.Oil plug
- 8.Motor
- 9.Rechargeable battery
- 10.Trigger switch
11. Carbon brush
- 12.Pump case
- 13.Cylinder



SPECIFICATIONS

Model	DCC-1618
Cutting capacity	Up to 16mm (5/8 inch)
Cutting speed	\geq 5 seconds (16mm)
Voltage	DC18V
Weight	7.3 kg (including battery)
Dimensions	460×98×240mm (without handle)

Rechargeable Battery

Model	EB18B
Capacity	2.0Ah

Battery charger

Model	UC24YC
Charging time	30 min.

OPERATING INSTRUCTIONS

▲ CAUTION : Indicates hazard that could result in minor personal injury and / or product damage.

CARE : Indicates hazard that will result in product damage.

RECHARGING BATTERY

To remove battery, press the blue latch and pull unit out. Refer to separate instruction sheet for charging instructions.

To replace battery, simply push it into the handle.

Note that battery must be charged before initial use.

PRE-USE CHECK

1. Check oil level. (See maintenance page 8.)
2. Check condition of cutter blocks and tightness of cutter block bolts.
(See maintenance page 8.)

▲ CAUTION : Using loose or cracked cutter blocks may result in injury to operator as well as damage to unit.

STOPPER ADJUSTMENT

The adjustable stopper functions to maintain the rebar in the correct position during cutting and must be properly set for each size of rebar before making a cut.

1. Screw in stopper to provide sufficient clearance for rebar.
2. Insert rebar fully into U-shaped support. Make sure that rebar is resting on the base of the support.
3. Keeping rebar at right-angles (90°) to front cutter block, screw out stopper until it is just touching the rebar. Once set, the stopper needs no further adjustment while cutting rebars of the same diameter, but must be re-set for a different size rebar.

▲ CAUTION : Failure to correctly set the stopper will result in excessive wear of cutter blocks and may cause cut end to fly out.

CUTTING

1. Hold unit by handle and side handle. Cutting head may be rotated 345° to achieve the best working angle. To rotate head, hold unit by the handle and turn the housing.

2. Insert rebar between stopper and front cutter block, making sure that it is properly seated in U-shaped support.
3. Pull trigger-switch and keep depressed while piston advances and rebar is cut. (If switch is released at an intermediate point, piston will stop.)
4. When cut is complete, release switch. Piston retracts automatically. (Note that switch cannot be re-activated until piston has fully retracted.)

▲ CAUTION : Keep fingers away from housing and cutter blocks when cutting.

POINTS OF ATTENTION

1. Be especially careful when cutting off short lengths (30cm or less) as the cut end tends to fly out.

▲ CAUTION: Flying ends are a hazard to all personnel in the vicinity. Erect safety screens.

2. Do not cover air vents.

CARE: If vents are covered, motor will overheat and may burn out.

3. If hydraulic oil exceeds 70°C (158°F) in the temperature, power will drop. Allow unit to cool before resuming operation. (Be particularly careful in summer, when the aluminum pump case heats up quicker.)
4. If battery is allowed to run down, the piston may stop in an extended or semi-extended position. In this case, loosen release valve and piston will retract. Tighten release valve and recharge battery.
5. If piston should ever fail to retract completely after cutting, push rear cutter block backwards to manually retract piston.

▲ CAUTION: Use a rebar or flat metal bar for this purpose. Never push cutter blocks with any part of the hand, even if gloved.

Once piston has been retracted, pull trigger-switch long enough to partially advance piston. Disconnect battery. Check piston and housing for accumulated dirt and iron filings that may be jamming the piston. (See maintenance p.8.) If after cleaning, piston still does not automatically retract when fully extended, the piston itself may be damaged. Return the unit to an authorized agent for repair.

MAINTENANCE

CUTTER BLOCKS

Before using, always check that the two bolts on each cutter block are properly tightened. Using a loose block will result in damage to block and housing

Also check condition of cutter blocks.

If either cutting edge is dull or chipped, remove retaining bolts and rotate both blocks so that two new edges come into use.

Replace and tighten bolts. (Each block has four cutting edges.)

When all four cutting edges have been used or if either block is cracked or otherwise damaged, replace both blocks.



- ▲ CAUTION: A loose or cracked block may result in injury to operator.

CLEANING

Clean cutter everyday, preferable immediately after use. Wipe or brush away all dirt and metal filings. Pay particular attention to the lower half of the piston, where dirt is more easily accumulated.

- ▲ CAUTION: Wear gloves to protect hands from metal splinters. Do not use an air-gun: blasting with air can cause metal filings and/or dust to get into eyes and respiratory system.

OIL LEVEL CHECK

As the cutters are hydraulically operated, the oil-level must be checked at frequent intervals, preferably everyday.

Failure to maintain the oil at the proper level results in a drop in pressure and loss of cutting power.

- ▲ CAUTION: Hydraulic oil is highly flammable. Keep away from sparks and naked flame. Do not smoke.
- ▲ CAUTION: Hydraulic oil may cause inflammation of the eyes and skin. If ingested, it will cause diarrhoea and vomiting. In case of eye contact, rinse in clean water for at least 15 minutes and consult a physician.

In case of skin contact, wash thoroughly with soap and water.

In case of ingestion, consult a physician immediately.

Do not deliberately induce vomiting.

1. Oil should be warm but not hot. Warm up unit if cold.
2. Adjust stopper and make three or four cuts, noting exactly at what point the rebar is actually breaking.
3. Pinch a short piece of rebar, shopping just before it breaks off. Disconnect battery.
4. With partially severed rebar in place, turn unit over so that oil-plug is uppermost. (If unit is hot, allow to cool down.)
5. Remove oil-plug and seal-washer (packing).

▲ CAUTION: Never remove oil-plug when unit is hot or oil will spurt out.

6. Check that oil is level with bottom of plug hole (i.e. that pump case is full to the brim).
If oil level is too low, top up with 20-weight hydraulic oil with anti foam and anti-abrasion properties (ISO viscosity grade VG46, e.g. Shell oil Tellus 46, Mobil oil DTE-25 or Esso Uni power SQ46).
7. After topping up, extract air from system. Gently tilt cutter lengthwise and return it to a level position. Top up again and tilt in the opposite direction. Repeat this process until all air has been extracted.

CARE: Cutter cannot function properly if oil contains air bubbles.

8. Replace seal washer (packing) and plug. Connect battery and completely sever rebar.

OIL CHANGE

The hydraulic oil should be changed at least once a year, sooner if it appears dirty.

1. Remove battery. Remove oil-plug and packing. Turn cutter over and drain oil into a suitable receptacle. When oil ceases to drain out, tilt unit to rear so that oil trapped in the piston housing can run out. When housing is empty, tilt unit in the opposite direction to empty the residue in the pump case.
2. With drain-hole uppermost, slowly fill the unit with fresh oil. Replace plug and lightly tighten. Connect battery and advance piston two or three times. Disconnect battery and remove oil-plug. Top up oil-level and replace plug.
3. Finally, follow procedure for oil-level check. (Steps 2 – 8.)

NOTE: Dispose of hydraulic oil in accordance with local regulations. Do not pour into the sea, a river a lake or drain.

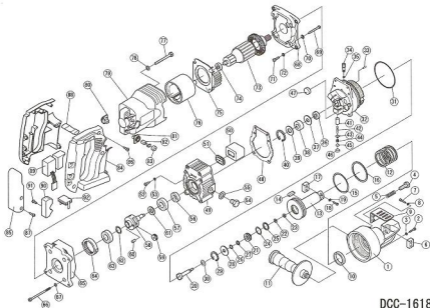
BOLT TIGHTNESS

Once a week, or after every 500 cuts, check the tightness of all bolts, especially those securing the housing to the cylinder. Loose bolts will result in a loss of power.

OVERHAUL

Return the unit to an authorized agent for overhaul at least once every two years, sooner if subjected to heavy use.

Model DCC-1618 Cordless Rebar Cutter



DCC-1618

No.	Part No.	Part Name	Qty	No.	Part No.	Part Name	Qty	No.	Part No.	Part Name	Qty
1	1C285006	HOUSING	1	33	72P03010	SPRING PIN	1	65	1C202100	DISTANCE PIECE	1
2	7C085025	CAP BOLT M5x25	1	34	1C4196000	RELEASE VALVE	1	66	7C080065	CAP BOLT M5x45	4
3	7D1930570	SEAL WASHER M5	1	35	7D54	O RING S4	1	67	7G0905	WASHER M5	4
4	78919025	STOPPER BOLT M13x25	1	36	7G35	BALL BEARING	1	68	1C1062000	DISTANCE PIECE	1
5	1C4870400	LOCK SPRING	1	37	1C4103000	BEARING GUIDE	1	69	7NT50030	TAPPING SCREW M5x30	4
6	1C1803	CUTTER BLOCK NO. 13L	1	38	7D14701010	NEEDLE BEARING	1	70	78M0050	SPRING WASHER M5	4
7	7C085022	CAP BOLT M5x22	2	39	1C4132000	BEARING GUIDE	1	71	7C080016	CAP BOLT M5x16	4
8	78W065	SPRING WASHER M5	2	40	7D5920	SNAP RING	1	72	7G0305	WASHER M5	4
9	1C4195500	CUTTER GUARD	1	41	1C4101200	RAM	3	73	7369779	ARMATURE	1
10	7U526	USI PACKING US26	1	42	1C4197190	RAM RETURN SPRING	3	74	7639V	BALL BEARING 808xV	1
11	1C1127	SIDE HANDLE	1	43	1C1973	DELIVERY VALVE	3	75	7319768	FAN GLIDE	1
12	1C413462	RETURN SPRING	1	44	1C1231	DELIVERY VALVE SPRING	3	76	7319846	MAGNET	1
13	1C697890	PISTON	1	45	1C1252	SPRING GLIDE	1	77	7HT50080	TAPPING SCREW	2
14	1C4139182	PISTON KEY	1	46	1C1292	PUMP HEAD SEAL	3	78	7P9004	PLATE WASHER M4	2
15	7D5949RF	O RING	1	47	7P1044	MAGNET FILTER	2	79	7322962	MOTOR HOUSING	1
16	78RP488	BACK UP RING P48	1	48	1C4142400	PUMP CASE PACKING	1	80	7319813	BRUSH HOLDER (A)	1
17	1C1803	CUTTER BLOCK NO. 13L	1	49	1C4647000	PUMP CASE	1	81	7319814	BRUSH HOLDER (B)	1
18	7C085016	CAP BOLT M5x16	1	50	1C4137000	AIR BAG	1	82	7669058	CARBON BRUSH SET	1
19	7G0905	WASHER	2	51	1C4137400	AIR BAG NUT	1	83	7319847	BRUSH CAP	2
20	1C4132000	RETURN VALVE	1	52	7NT04012	SCREW 04x12	2	84	732263A	HANDLE A (R)	1
21	1C4132000	RETURN VALVE GUIDE	1	53	78M004	SPRING WASHER M4	2		732263B	HANDLE B (L)	1
22	7P953095	PLATE WASHER	1	54	7D10006	BOLT M10x8	1	85	7319790	GRP COVER	1
23	7N2005	U NUT M5	1	55	1C1305	SEAL WASHER WF10	1	86	7F6504020	TAPPING SCREW 4x30	3
24	7DRP16	O RING P16	1	56	75C12257	OIL SEAL	1	87	7F6604025	TAPPING SCREW 4x25	4
25	78RP168	BACK UP RING P16	1	57	76M0122	BALL BEARING 6801ZZ	1	88	7319885	PUSH BUTTON	1
26	7SPN28	SPIND PACKING SPN28	1	58	1C3107408	CAM SHAFT	1	89	7319861	SWITCH	1
27	78RP88	BACK UP RING P8	1	59	1C4186400	IDLE GEAR	2	90	7319812	HEAT SINK	1
28	1C4114002	GUIDE CLAMP	1	60	1C4196700	NEEDLE ROLLER	2	91	7P304912	TAPPING SCREW	1
29	7DR125	SNAP RING H25	1	61	1C4196800	DOLLAR	1	92	7321647	TERMINAL PIECE SET	1
30	789866	DISC SPRING	1	62	78F172450	SHM RING	1				
31	7D5930RF	O RING 0.79	1	63	76003ZZ	BEARING 6803ZZ	1				
32	1C2344801	CYLINDER	1	64	7300337	RING GEAR	1				